



Applications

Eye bolts and eye nuts are used for lifting machines, appliances or any other objects which cannot be lifted by hand or by fork lift truck.

Range

Van Beest offers a wide range of lifting eye bolts and eye nuts, from M6 up to M100, with WLLs from 0.07 t up to 40 t.

Van Beest can also offer other types of eye bolts and nuts in grade 8 and stainless steel. Please refer to the EXCEL® section in this catalogue for more information.

Design

Eye bolts and eye nuts are drop forged from C15 steel. The threading is standard metric.

Each eye bolt and eye nut is generally marked with:

- | | |
|-------------------------|--|
| - Working Load Limit | ■ e.g. 0.7 t, valid for in-line lifting; |
| - manufacturer's symbol | ■ e.g. Bs |
| - thread diameter | ■ e.g. M16 |
| - traceability code | ■ e.g. A1 |
| - steel grade | ■ C15 |
| - CE conformity code | ■ CE |

Finish

The eye bolts and eye nuts can be self coloured, electro-galvanized or hot dipped galvanized.

Certification

Specific details of certificate availability can be found on each product page. Please verify your certification requirements with Van Beest at time of order.

Instructions for use

Eye bolts and eye nuts should be inspected before use to ensure that:

- all markings are legible;
- an eye bolt or eye nut with the correct WLL has been selected;
- WLLs are valid for in-line lifting only and have to be reduced for non-axial loading. For further details please refer to the standard: DIN 580 for eye bolts or DIN 582 for eye nuts;
- when used as a lifting device, the eye bolt or eye nut should always be fully screwed into the load in such a way that it fits properly against the load;
- make sure the thread is undamaged and clean;
- eye bolts and eye nuts are free from nicks, gouges and cracks;
- never grind, machine or cut an eyebolt or eye nut;
- eye bolts or eye nuts may not be heat treated as this may affect their WLL;
- never modify, repair or reshape an eye bolt or eye nut by machining, welding, heating or bending as this may affect the WLL.

Products must be regularly inspected in accordance with the safety standards valid in the country of use. This is required because the products in use may be affected by wear, misuse, overloading etc. which may lead to deformation and alteration of the material structure.

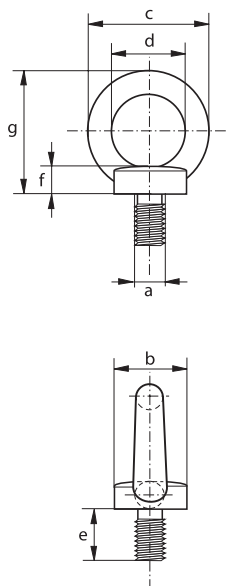
Inspection should take place at least every six months and more frequently when the products are used in severe operating conditions.



E-8140

Eye bolts generally to DIN 580

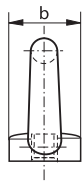
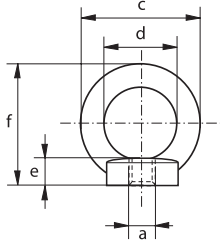
- Material : carbon steel, C15
- Safety factor : MBL equals 6 x WLL
- Standard : generally to DIN 580
- Finish : electro-galvanized
- Certification : 2.1 2.2 CE



working load limit	diameter thread	diameter base	diameter eye outside	diameter eye inside	length	thickness base	height	weight per 100 pcs
t	a mm	b mm	c mm	d mm	e mm	f mm	g mm	kg
0.07	M 6 x 1.00	20	36	20	13	6	36	5.1
0.14	M 8 x 1.25	20	36	20	13	6	36	5.5
0.23	M 10 x 1.50	25	45	25	17	8	45	10.3
0.34	M 12 x 1.75	30	54	30	20.5	10	53	16.9
0.49	M 14 x 2.00	35	63	35	27	12	60	29.9
0.7	M 16 x 2.00	35	63	35	27	12	62	30.7
0.9	M 18 x 2.50	40	72	40	30	14	71	42.8
1.2	M 20 x 2.50	40	72	40	30	14	71	42.4
1.5	M 22 x 2.50	45	81	45	35	14	80	62.8
1.8	M 24 x 3.00	50	90	50	36	18	90	90.8
2.5	M 27 x 3.00	50	90	50	36	18	90	88.3
3.2	M 30 x 3.50	65	108	60	45	22	109	159
4.3	M 33 x 3.50	65	108	60	45	22	110	167
4.6	M 36 x 4.00	75	126	70	54	26	128	235
6.1	M 39 x 4.00	75	126	70	54	26	130	266
6.3	M 42 x 4.50	85	144	80	63	30	147	403
8	M 45 x 4.50	85	144	80	63	35	150	521
8.6	M 48 x 5.00	100	166	90	68	35	168	632
11.5	M 56 x 5.50	110	184	100	78	38	187	879
16	M 64 x 6.00	120	206	110	90	42	208	1240
21	M 72 x 6.00	150	260	140	100	50	260	2293
28	M 80 x 6.00	170	296	160	112	55	298	3200
40	M 100 x 6.00	190	330	180	130	60	330	4800



E-8142



Eye nuts generally to DIN 582

- **Material** : carbon steel, C15
- **Safety factor** : MBL equals 6 x WLL
- **Standard** : generally to DIN 582
- **Finish** : electro-galvanized
- **Certification** : 2.1 2.2 CE

working load limit	diameter thread	diameter base	diameter eye outside	diameter eye inside	thickness base	height	weight per 100 pcs
t	a mm	b mm	c mm	d mm	e mm	f mm	kg
0.07	M 6 x 1.00	20	36	20	8.5	36	5.1
0.14	M 8 x 1.25	20	36	20	8.5	36	5.2
0.23	M 10 x 1.50	25	45	25	10	45	9.4
0.34	M 12 x 1.75	30	54	30	11	53	16
0.49	M 14 x 2.00	35	63	35	13	60	25.5
0.7	M 16 x 2.00	35	63	35	13	62	24
0.9	M 18 x 2.50	40	72	40	16	71	36
1.2	M 20 x 2.50	40	72	40	16	71	35.2
1.5	M 22 x 2.50	45	81	45	18	80	51.7
1.8	M 24 x 3.00	50	90	50	20	90	75.4
2.5	M 27 x 3.00	50	90	50	20	90	102
3.2	M 30 x 3.50	65	108	60	25	109	125
4.3	M 33 x 3.50	65	108	60	25	110	131
4.6	M 36 x 4.00	75	126	70	30	128	208
6.1	M 39 x 4.00	75	126	70	30	130	210
6.3	M 42 x 4.50	85	144	80	35	147	305
8	M 45 x 4.50	85	144	80	35	150	407
8.6	M 48 x 5.00	100	166	90	40	168	502
8.6	M 52 x 5.00	110	184	100	45	187	830
11.5	M 56 x 5.50	110	184	100	45	187	669
16	M 64 x 6.00	120	206	110	50	208	930
21	M 72 x 6.00	150	260	140	60	260	1500



10

11

12

13

14

15

16

17

18

19

20