



travspring™

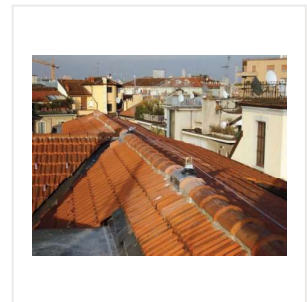
The travspring™ lifeline is an anchoring system equipped with a flexible horizontal belaying support and complies with the EN 795-C standard. This is a proximity lifeline where the user manually passes the intermediary cable support points, without disconnecting. Intermediate anchors must be positioned no more than 15 meters apart.

The travspring™ lifeline is designed for 5 users.

Thanks to its INRS Patented shock absorber, the Travspring™ lifeline only produces a minimum impact on the end anchor in the event of a fall. All lifeline parts are made of stainless steel, with an 8mm galvanized or stainless steel cable.

The Travspring™ lifeline can be installed on a wall or ground support or a stanchion.

For more information please contact Tractel® .



travspring™ One

The new travspring™ one lifeline is a highly effective, yet simple, lifeline system. It is a simpler version of the well-known travsmart.

The main advantages of the travspring™ one lifeline are:

- Galvanised steel components.
- The use of rings as intermediate points.
- Possibility for use on walls or posts.
- Can be used simultaneously by 5 users.
- Distance between intermediate anchors: max 15 m.

